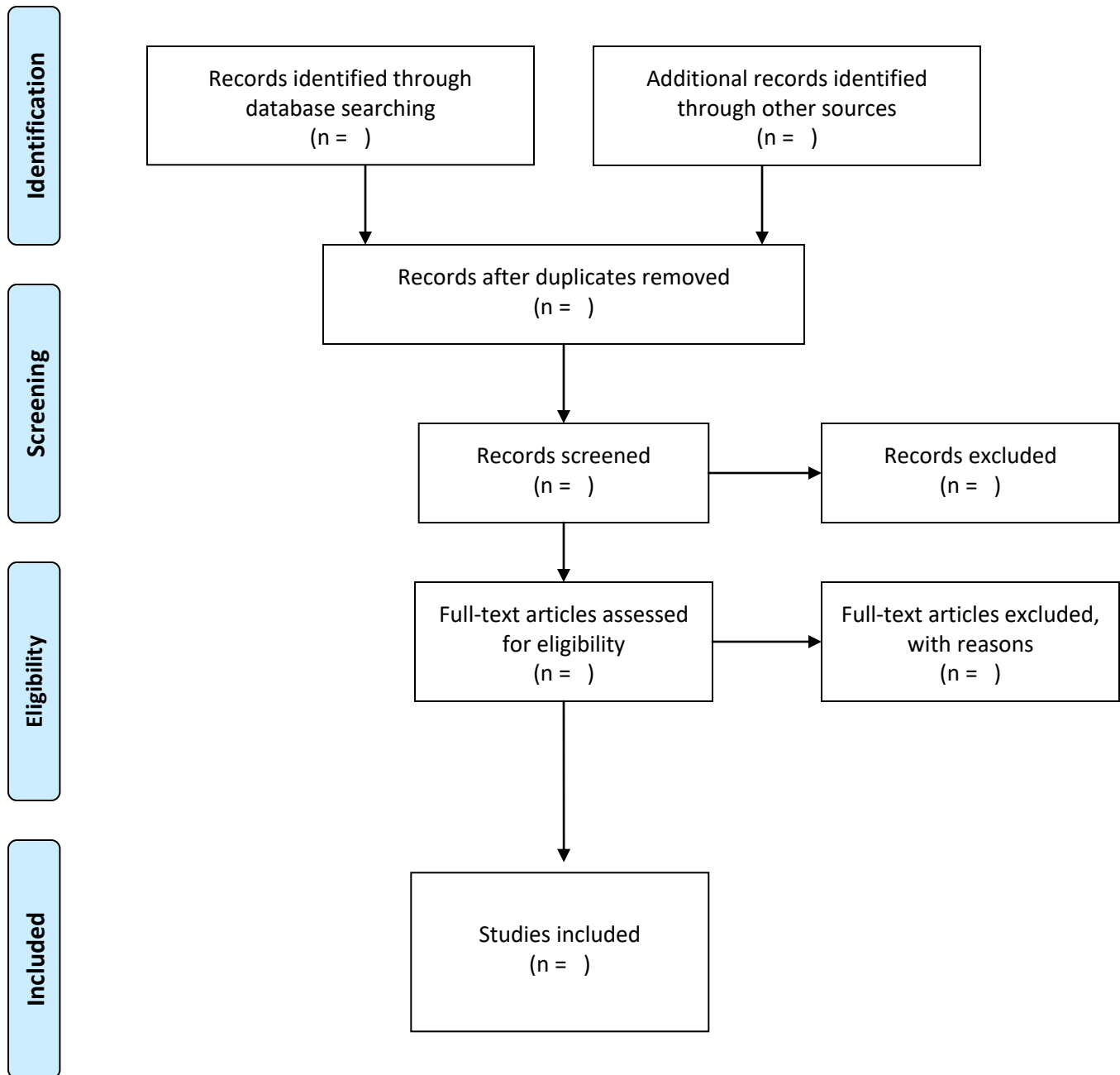


PRISMA Flow Diagram for the scoping review process



From: Moher D, Liberati A, Tetzlaff J, Altman DG, The PRISMA Group (2009). Preferred Reporting Items for Systematic Reviews and Meta-Analyses: The PRISMA Statement. PLoS Med 6(7): e1000097. doi:10.1371/journal.pmed1000097

Modified: The Joanna Briggs Institute Reviewers' Manual 2015. Methodology for JBI Scoping Reviews. Published by the Joanna Briggs Institute, 2015.

For more information, visit: www.prisma-statement.org.

http://joannabriggs.org/assets/docs/sumari/Reviewers-Manual_Methodology-for-JBI-Scoping-Reviews_2015_v2.pdf